

REV	ECO	DESCRIPTION	DRFT	CHKD

NOTES:

ELECTRICAL:

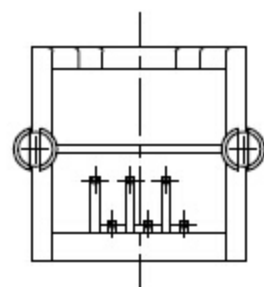
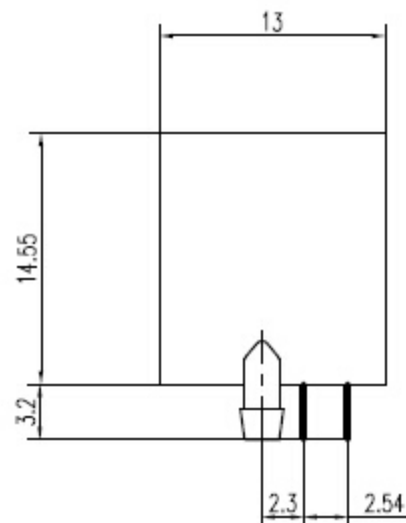
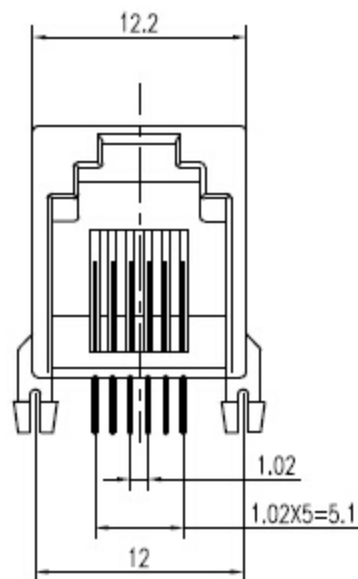
1. VOLTAGE RATING :125 VAC RMS.
2. CURRENT RATING :1.5 AMP.
3. CONTACT RESISTANCE :30 MILLIOHMS MAX.
4. INSULATION RESISTANCE :500 MEGOHMS MIN @ 500V DC .
5. DIELECTRIC STRENGTH :1000V AC RMS 50Hz. 1MIN.

MECHANICAL:

1. HOUSING MATERIAL :GLASS FILLED POLYESTER UL94V-0.
2. CONTACT MATERIAL :PHOSPHOR BRONZE ϕ 0.46mm.
3. PLATING :GOLD PLATING OVER NICKEL.
4. OPERATING :750 CYCLES MIN.
5. PCB RETENTION PRE-SOLDER :1 LB MIN.

ENVIRONMENTAL:

1. Temperature Range : $-45^{\circ}\text{C} \sim +85^{\circ}\text{C}$
2. Relative Humidity : $90 \sim 95\%$ ($40 \pm 2^{\circ}\text{C}$)



PCB LAYOUT

