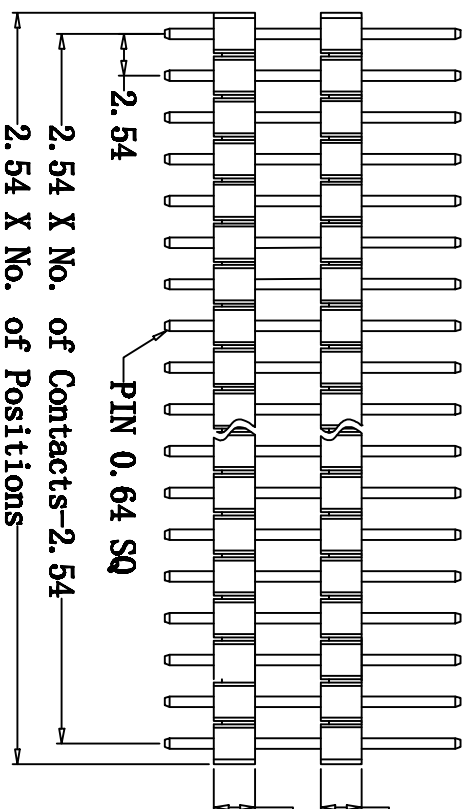


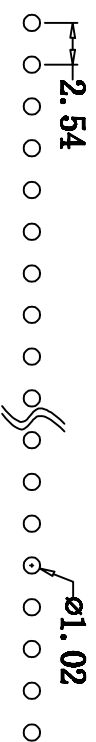
2.50 ± 0.1



2.50 ± 0.1

PIN 0.64 SQ

2.54 X No. of Contacts - 2.54

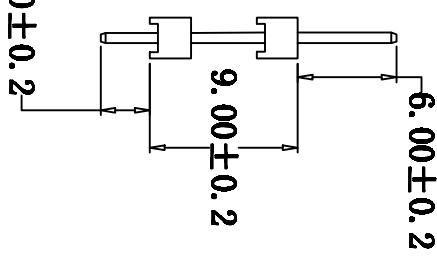


Ø1.02

PCB LAYOUT

**SPECIFICATIONS**

1. Current Rate :3AMP
  2. Operation Temperature: -40° C to +105° C
  3. Contact Resistance :20m Ω Max.
  4. Insulation Resistance :1000M Ω Min.
  5. Withstanding Voltage :AC 1000V
  6. Insulator Material :Polyester (UL94V-0)
  7. Contact Material Standard: PRT or PA6T
  8. Contact plating :Brass
- :Au or Sn over 50 U" NI



6.00 ± 0.2

9.00 ± 0.2

3.00 ± 0.2

PIN	A	B	PIN	A	B
1	2.54	0	21	53.34	50.8
2	5.08	2.54	22	55.88	53.34
3	7.62	5.08	23	58.42	55.88
4	10.16	7.62	24	60.96	58.42
5	12.7	10.16	25	63.5	60.96
6	15.24	12.7	26	66.04	63.5
7	17.78	15.24	27	68.58	66.04
8	20.32	17.78	28	71.12	68.58
9	22.86	20.32	29	73.66	71.12
10	25.4	22.86	30	76.2	73.66
11	27.94	25.4	31	78.74	76.2
12	30.48	27.94	32	81.28	78.74
13	33.02	30.48	33	83.82	81.28
14	35.56	33.02	34	86.36	83.82
15	38.1	35.56	35	88.9	86.36
16	40.64	38.1	36	91.44	88.9
17	43.18	40.64	37	93.98	91.44
18	45.72	43.18	38	96.52	93.98
19	48.26	45.72	39	99.06	96.52
20	50.8	48.26	40	101.6	99.06

深圳市深富盛电子有限公司

公差

K.X ± 0.25
K.XX ± 0.2
K.XXX ± 0.1

存货名称

审核	制图	作成	比例	页数	1/1
肖瑞雪	石宁波	张自林	单位	mm	

